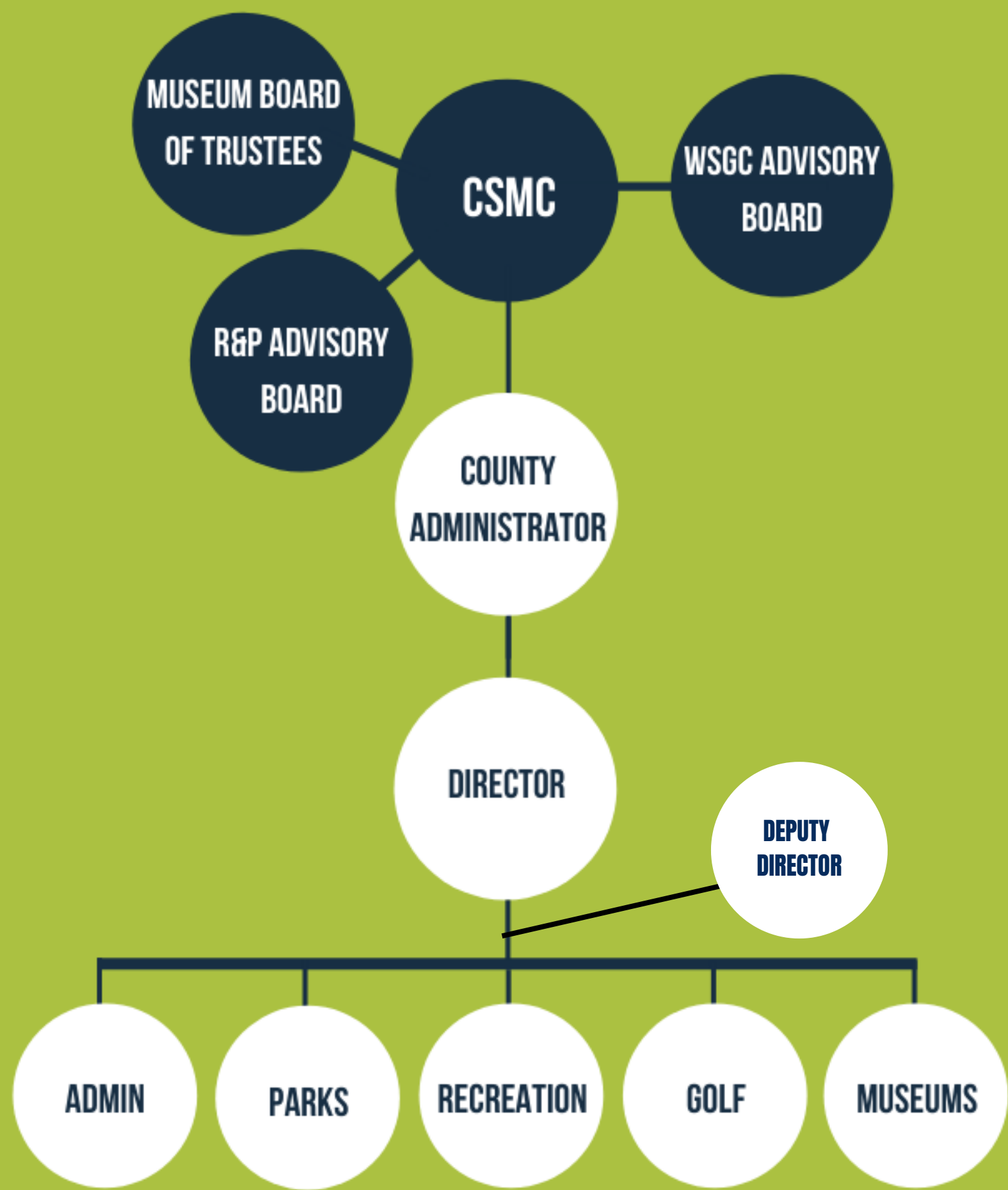




Department Overview

Arthur Shepherd, Director

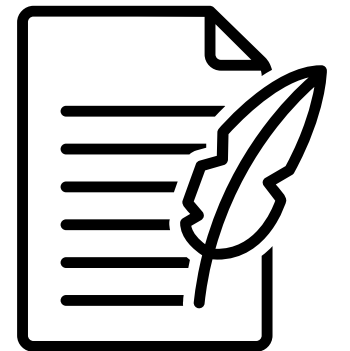
Our Organization





Our History

- 1946 - developer donated land for what would become the county's first park - Nicolet Park. The park's development began in early 1950s.
- 1965 - First Recreation and Parks Board established under direction of MD General Assembly
-
- 1966 - Mr. Albert L. Barthelme, Sr. was named supervisor of the St. Mary's County Youth Commission. Commission consisted of four area recreation councils.
 - Bay District Recreation Council
 - Central District Recreation Council
 - Leonardtown Recreation Council
 - Western Area Recreation Council
- The Department of Recreation and Parks was created in the late 1960s and on November 17, 1969 Mr. John Baggett was named Director and served for 20 years. John V. Baggett Park at Laurel Grove is named in his honor.
- Mr. Barthelme was named the Department's first Recreation Supervisor and developed the county's first sport and summer camp programs. He served until 1985.
- In 1972, Ed Atkins hired as the second Recreation Supervisor.
- And in 1994, the Recreation and Parks Board re-established by Resolution No. 94-11 under the direction of the Commissioners for St. Mary's County.



ST. MARY'S COUNTY
RECREATION & PARKS



NATIONALLY
ACCREDITED

In 2022 St. Mary's County Department of Recreation and Parks joined the ranks of elite park and recreation agencies across the country by earning accreditation through the Commission for Accreditation of Park and Recreation Agencies (CAPRA). This mark of distinction indicates that an agency has met rigorous standards related to the management and administration of lands, facilities, resources, programs, safety and services.

2023 Annual Report submitted April 2023

FY2024 Budget Highlights

Total Operating Budget - \$13,250,835

General Fund **\$5,925,298***

- Admin \$ 1,522,178
- Parks \$3,205,111
- Museums \$ 931,744
- Grants \$ 30,181
- Non-Profits \$ 136,330
- CRRP \$ 99,754

Enterprise Funds **\$7,325,537**

- Golf \$1,731,776
- Recreation \$5,593,761



Approximately 45% of operating budget from tax support; 55% from fees and charges

Approximately 2% of overall County Government FY24 General Fund budget of \$318,196,923



Parks

The ***Parks Division*** is responsible for:

- Twenty-two county parks
- Fifteen public landings
- Eighteen playgrounds
- 1,400+ acres of parkland
- 2,700+ acres of county property
- Three Notch Trail - 11+ miles
- Skate parks & Sprayground
- Facility maintenance
- Equipment maintenance

Recreation

The **Recreation Division** is responsible for:

- **Facilities:** Gymnastics Center; Great Mills Pool; Hollywood, Margaret Brent, Leonard Hall, Carver Recreation Centers & the Wellness and Aquatics Center
- **Youth Programs:** School Age Centers; Summer Camps; Tiny Tots; Parent's Night Out
- **Sports:** Youth instructional & league play; Adult leagues; Sports camps; Affiliated & sponsored leagues
- **Wellness & Leisure Programs:** Classes, Self-defense, education
- **Therapeutic:** Classes; Summer camps; Inclusion services
- **Special Events:** Family themed



Dedicated Staff

"We work so others can play"

- Summerstock Theater
- Easter Egg Festival
- Scholarship Fund Golf Tournament
- Trips & Tours
- Family Roller Skating
- Health & Wellness Classes
- Parent & Child Dances
- Family Kickball Games
- Kid's Night Out

ST CLEMENT'S ISLAND MUSEUM
NEW BUILDING



Museums

PERSPECTIVE RENDERING - CONCEPT 2

The *Museums Division* is responsible for:

- St. Clement's Island Museum
- Piney Point Lighthouse, Museum & Historic Park
- Drayden African American Schoolhouse
- Charlotte Hall Schoolhouse
- Old Jail Museum
- U-1105 Black Panther Historic Shipwreck Preserve
- Water Taxi to SCl, tours, special events, tours & exhibits

The Museums Division has been awarded the highest honor a museum can receive - Accreditation by the American Alliance of Museums



Wicomico Shores Golf Course



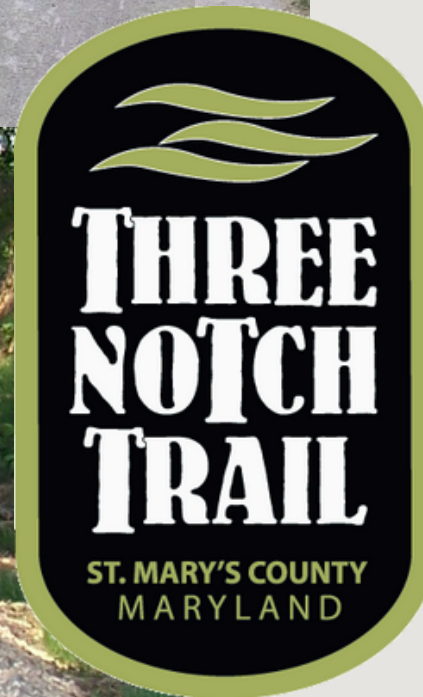
Challenging Affordable Fun

- 18-Hole Public Golf Course
- Riverview Restaurant
- Open 7-days a week
- Tournaments, weddings, events
- Bunker renovations, equipment, cart paths outlined in FY19-24 CIP

Capital Budget: FY24 funding

• Recreation Facility & Park Improvements	\$2,650,000
• Elms Beach Park Improvements	\$ 435,000
• St. Inigoes Boat Facility	\$ 250,000
• Myrtle Point Park	\$125,000
• Gymnastics Center	\$4,962,000
• Childcare Facility	1,879,155
• Dog Parks	\$475,000





Three Notch Trail

- Complete - Phases I, II, III, IV, V, VI
- Phase VII under design
- Eleven+ miles open
- Over 20 miles when complete
- 10 feet wide asphalt trail
- Heavily used multi-use facility

Some sections in Phases III, IV still need to be completed

Snow Hill Park

Planning and design underway for:

- Boat Launch and trailer parking on Patuxent River
- Kayak Launch and Parking on Roslin Creek
- Planning for new playground and waterfront pavilion
- Improved entrance and roadways
- Restroom facilities



Land Preservation, Parks & Recreation Plan (LPPRP)



1

New 2022 LPPRP approved by County and waiting final State Approval

2

Required every five years to utilize Program Open Space (POS); due 2027

3

Three components: Recreation & Parks; Agricultural Preservation; Natural Resource Protection



- Continue to improve and enhance existing county facilities and amenities.
- Continue to improve programs and service delivery.
- Continue to look for opportunities to develop new facilities and amenities.
- Continue to improve organizational efficiencies.

Questions?



ST. MARY'S COUNTY
R&P



arthur.shepherd@stmaryscountymd.gov

(301) 475-4200 ext. 1800

23150 Leonard Hall Drive

Leonardtown, MD 20650