

*Maryland begins here!*

# the finer points

A newsletter from the Friends of the  
St. Clement's Island and Piney Point Museums



January 2009

*The Friends support historical interpretation, educational programs and special needs of the sites managed by the St. Mary's County Department of Recreation, Parks and Community Services' Museum Division: St. Clement's Island Museum, the Little Red Schoolhouse, the Piney Point Lighthouse, Museum and Historic Park, the Drayden African-American Schoolhouse, and the U-1105 Black Panther German submarine shipwreck preserve. A non-profit organization, the Friends sponsor special events, assist with acquisitions and publish this newsletter to broaden understanding of and interest in these important historic sites.*

## The Friends' 25th Anniversary Museums (and Maryland) mark major milestones

*By Sheila Gibbons Hiebert, President*

The Friends of the St. Clement's Island and Piney Point Museums are reaching an important milestone in 2009: our 25th anniversary as a membership organization supporting the work of the St. Mary's County Museum Division.

And happily, that anniversary coincides with the 375th birthday of the state of Maryland, whose colonial history began with the English settlers' landing on St. Clement's Island in 1634.

Incorporated as the Foundation of the Friends of the St. Clement's Island-Potomac River Museum in 1984, our organization was established to maximize the opportunities for support and advancement of museum projects and goals. Many of the same energetic community advocates who pleaded, cajoled, and persuaded public officials to establish a museum in St. Mary's rural Seventh District that would interpret events of Maryland's colonial period – an effort that saw

the St. Clement's Island Museum open in 1975 – also saw the need for an organization that would help sustain it.

The St. Mary's County Museum Division benefits from the involvement of two boards – the Trustees, who are appointed by the County Commissioners to represent the community's interests, and the Board of Directors of the Friends, whose role is to raise awareness of the Museum Division's work and generate funds that will underwrite educational programs, special projects and initiatives to enhance the experience of those who visit our Museum Division sites.

In the beginning, the Friends' focus was on the St. Clement's Island Museum. Later, as the Museum Division added the



*See Milestones, page 4*

*Inside: Saving the Susans, Ace of Cakes, Friends News and more!*



*Center graphic: The current Friends logo (larger) and the old logo updated in 2003. Photo: Looking festive for Maryland's 350th celebration in 1984 are the Kopels of Colton's Point whose love of St. Clement's Island stems from childhood. Pictured left to right: Bob Kopel, Monika Kopel, Inky Kopel, little Dita Kopel, and Carl Kopel.*

**The Friends of the  
St. Clement's Island and  
Piney Point Museums**

38370 Point Breeze Rd.  
Colton's Point, MD 20626  
301/769-2222 FAX: 301/769-2225  
www.stmarysmd.com/recreate/museums

**Museum Staff**

Debra Pence  
Museum Division Manager

Lydia Wood  
Historic Sites Coordinator

Christina Barbour  
St. Clement's Island  
Site Supervisor

April Havens  
Piney Point Lighthouse  
Site Supervisor

Kimberley A. Cullins  
Marketing and Development  
Specialist

Carol Cribbs  
Museum Stores Manager

Greg Mora  
Exhibits Fabrication  
Specialist

**Friends Board of  
Directors**

Sheila Gibbons Hiebert  
President

Lewie Aldridge, Jr.  
Vice President

Ann Davis  
Secretary

Paul G. Nelson  
Treasurer

Sharon Balenger

John Madel

County Commissioner  
Thomas A. Mattingly, Sr.

Patricia Cooke Weiland

Delegate John F. Wood, Jr.

*Kimberley A. Cullins  
Newsletter Editor*

*kim\_cullins@co.saint-marys.md.us*

# A Deep Bow to Our Annual Appeal Donors

*By Sheila Gibbons Hiebert, President*

Thanks to all our Friends who participated in our Annual Appeal. Your generous gifts will support improvements to interpretive exhibits and will enliven the wonderful stories they tell about Maryland's early history.

As we went to press with this issue of the *Finer Points*, appeal donations were still arriving. If you don't see your name here, rest assured that we'll be bowing to you in the next issue!

Karen Abrams  
Dorothy Bailey  
Timothy and Caroline Baldwin  
Sharon Balenger  
Dorothy Barclift  
John M. Barry  
Paul and Doris Berry  
John Hanson Briscoe  
William and Bettie Broadhurst  
Sam and Vicki Brown  
Elliott and Rita Burch  
Marilyn Butterfield  
Joseph and Melissa Carnes  
Charles and Rose Davis  
Marie L. deLozier  
Steven and Linda Deutsch  
Andrew and Florence Devine  
Sandy and J. C. Dyson  
Rex and Frances Eagan  
Julie and Jack Edwards  
Tom and Anne Emery  
Albert Evans  
John A. Freeman  
Gerald and Helen Grady  
Guy Distributing Company  
J. Roy and Elizabeth Guyther  
Rose Guyther  
John and Elizabeth Harden  
Al and Kay Hayden  
Ray and Sheila Hiebert  
M. Kiplinger Hine  
Larry and Mary Hyatt  
Edward and Genevieve Kennett  
Julia King  
Bob and Inky Kopel  
Carl and Monika Kopel  
Ann Lawrence  
Lorraine and James Leonard  
John and Annette Madel

Russell and Wanda Maske  
Thomas and Denise Mattingly  
William and Patricia Mattingly  
Claudia McAuliffe  
Frederick Millhiser and  
Jane Lawrence  
Paul and Mellie Nelson  
Sean and Sharon Odenthal  
Patrick William O'Donnell  
Robert and Mary Jane Palmby  
Sarah Pingleton  
Kayann Pilkerton  
Rosemary Rappole and  
Diane Randolph  
PNC Bank  
Katharine Reed  
Edith and Mel Rogers  
Mary Ida Rolape  
Frank and Marjorie Rubala  
Phil Rollins  
Edward and Louise Sanders  
Louise K. Snell  
Marion Sterling  
Tomlin and Becky Stevens  
Phil and Sue Stinchcomb  
Eleanor Duke Storck  
Francis and Jeanne Toth  
Peter W. Verburgt  
Henry and Nancy Virts  
Herb and Francene Walling  
Joan Warczynski  
Thomas B. Watts  
Rebecca Wolf  
Geraldine Wood  
John and Barbara Wood  
Margaret A. Wood  
Christine Wray and John Felicitas  
Anna Lois Yates  
Vivian K. Zimmerman



# *Saving the Susans*



The dry summers of 2007 and 2008 took their toll on the Black-eyed Susan flower garden on St. Clement's Island. The lack of rain left hundreds of these once thriving, prolific bloomers in dried up clumps with brittle stems and pitiful flowers struggling to survive. For most, the battle was lost.

The St. Clement's Hundred community organization has once again come to the rescue, funding the purchase of 400 Black-eyed Susan plants to revitalize the Island garden of Maryland's official state flower. Wentworth Nursery of Charlotte Hall generously sold the plants at cost.



In November, Island caretaker Bob Kopel spearheaded the project to lime, fertilize, and till the flower bed in preparation for the fall planting. With the help of Mike Alderson and St. Mary's County Detention Center workers, the 400 Black-eyed Susan plants were transported by boat to St. Clement's Island and planted. Look for the floral splendor of the flower garden to peak mid-July.



*Photos, clockwise from bottom left: St. Clement's Island Ranger Bob Kopel and Eric Babcock transport Black-eyed Susan plants to St. Clement's Island from the St. Clement's Island Museum pier. • Bob and Mike Alderson prepare the fledgling plants for the flower garden. • Eric Babcock gingerly sets the flowers into the prepared soil. • Bob prepares each hole by hand to carefully space the plants at the recommended distance. • Eric Babcock proudly displays a tray of Black-eyed Susan plants destined for planting on St. Clement's Island. Photos by Eddie Compton*

## 2009 Calendar of Events

Clip and Save calendar for  
St. Mary's County  
Museum Division

- January 24** – Appraiser's Fair
- February 8** – Friends Annual Meeting
- March 25** – Maryland Day (begins at 11 a.m.)
- May 9 & 10** – Piney Point Lighthouse Waterfront Festival
- July 11** – Potomac Jazz & Seafood Festival
- July 25** – St. Clement's Island History & Heritage Day
- August 8** – Children's Day
- September 12** – Murder Mystery Dinner
- October 3 and 4** – Blessing of the Fleet
- December 2 to January 3, 2010** – 24th Annual Christmas Doll & Train Exhibit

# Friends Celebrate 25 Years; Kick Off the Next 25!

## *Milestones, continued from page 1*

Piney Point Lighthouse, the Charlotte Hall Schoolhouse, the Drayden African American Schoolhouse, and the U-1105 Submarine Shipwreck Preserve to its interpretive portfolio, the Friends expanded their support accordingly and modified the organization's name and logo to recognize the Museum Division's two principal sites.

Louanne Bailey was a member of the museum's governing board (now the Trustees) and president of the Friends during the organization's early years. She recalls that an early goal for the Friends was raising the profile of the St. Clement's Island Museum in order to increase visitation and attract paying members.

"One big thing we did, in connection with the state's 350th anniversary in 1984, was an exhibit of small art pieces," she remembers. "We had a reception and invited business people to come. If they bought tickets, they received a print of the Ark and Dove. We raised \$1,000! It was a good way to get people to come to the museum."

Financial planning to support the museums took off from there. The Friends began selling annual memberships for \$15 to generate a reliable stream of income that would help with budget planning. Later, multiple categories of membership, with different dues levels, were established to give Friends members a choice of support levels. Corporate memberships also were created.

Other fundraisers have included the Richard Arnold Memorial Auction, a lively annual event that raised money for a number of years; the Potomac Jazz and Seafood Festival and the Murder Mystery Dinner, continuing events that have helped us to introduce Museums to larger constituencies and increase our resources at the same time; and an annual appeal. In addition, donations from members and community groups, especially the Seventh District Optimist Club and the Chesapeake Bay Running Club; from families and friends who honor loved ones with memorial gifts; and from corporations that sponsor programs and events have enabled the Friends to be effective partners for the Museum Division.

In the last quarter century, dozens of individuals have served as members of the Friends Board of Directors, thoughtfully discussing with museum division managers Michael Humphries, and since 2004, Debra Pence, the best ways to allocate our resources. The Friends' key accomplishments include:

- facilitating and investing in the acquisition of land and property for Museum Division use in Colton's Point

- providing seed money for the expansion and renovation of the museum campus at Piney Point
- restoring the 19th-century Little Red Schoolhouse after its move from Charlotte Hall, MD, to the grounds of the St. Clement's Island Museum
- covering the salary of a museum employee every year
- paying for professional development opportunities for museum staff, including conference attendance and travel
- publishing the *Finer Points* quarterly newsletter
- covering completely or sharing the purchase cost of items acquired for the Museum Division's collections of artifacts
- replacing and upgrading equipment and software
- underwriting the cost of annual community events, such as Maryland Day, Children's Day, St. Clement's Island History and Heritage Day and the winter Holiday Open House in Colton's Point; and at Piney Point, the Waterfront Festival and the Maryland Lighthouse Challenge.

In addition, the Friends adhere to all the standards required of non-profit organizations that are stewards of funds given for special purposes.



During our 25th anniversary year, we will be assisting the Museum Division with planning and construction of a collections management facility that will – at last – allow the Museum's collections to be consolidated and properly stored and cared for in a building designed expressly for that purpose. Plans are for the building to be located near the parking area behind the St. Clement's Island Museum. Once it is completed, the Museum Division staff can begin replacing and refreshing exhibits inside the museum building.

This will be our signature fundraising project during our anniversary year. A special presentation on the project will be given at our annual membership meeting Sunday, Feb. 8, 2009, at the St. Clement's Island Museum. Please join us! It will be a great way to kick off the next 25 years!

***Photos: (Top) The Little Red Schoolhouse, donated by the Henry J. Fowler family, moves to its new home on the grounds of the St. Clement's Island Museum in 1991. (Middle) Sue and Scott Shumway, Gerry McDonough, and the late Alice McWilliams tour the Piney Point Lighthouse Museum in 2005. (Bottom) Original Friends board members, staff and volunteers are pictured receiving a donation from C&P Telephone Company in 1984.***

## *A Letter From Debra*



*The Potomac Jazz & Seafood Festival was sold out for the second year in a row with over 800 in attendance. Photo by Kim Cullins*

Dear Friends,

What a great and rewarding year! Last year's attendance hit an all-time high with more than 55,000 visitors to our sites in 2008. With events that were sold out or filled to capacity, visitation to our museums and park grounds exceeded our expectations. Each mission-based event was enhanced through creative planning and the hard work of our staff, volunteers and community partners.

Each of the last several years we've worried that we couldn't possibly top the previous year's attendance numbers but lo and behold, we did! This coming year we will go the extra mile to launch the 375th anniversary celebration for St. Mary's County and the great state of Maryland and the 25th anniversary of the Friends! Please join us throughout the 2009 season as we strive to make it our best ever!

Very Sincerely,



# Meeting the 'Ace' of Cakes

*By Kimberley Cullins*

The celebration of Maryland's big 3-7-5 birthday in March of 2009 is a very big deal to the staff of the St. Clement's Island Museum, where everyone is quick to tell you, "Maryland begins here!" To mark a special birthday, one needs a special birthday cake.

So, when Museum Division Manager Debra Pence and I began discussions about Maryland Day 2009, we knew this was a job for one man, and one man only – Duff Goldman, the "Ace" of cakes.

Chef Duff is owner and creative genius of Charm City Cakes, a cake bakery in Baltimore, and star of the Food Network's highly-acclaimed television show "Ace of Cakes." As aficionados of the show, we have seen cake creations of extraordinary proportion, including edible replicas of cars, motorcycles, a shooting military tank, Wrigley Field, Radio City Music Hall, cakes for the Super Bowl and movie premieres. His untraditional use of blow torches, belt sanders and power saws illustrates his out-of-the-box, daring approach to cake making.

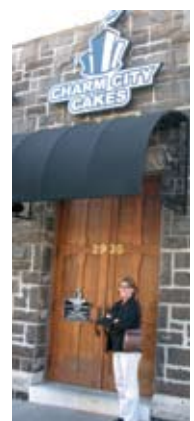
I got the go-ahead to make an appointment, and marked my calendar for Tuesday, December 2. Debra researched cake flavors and designs, and sketched out a conceptual design to take with us to our appointment.

The directions to Charm City Cakes landed us just north of Orioles Park. The formidable stone facade and massive wooden door reminded me of a scene from the Wizard of Oz. Then the Great Oz himself, Chef Duff, opened the door with an impish grin and led us inside. We stepped onto the set of "Ace of Cakes" where we saw a film crew chatting with Chef Duff's staff of baking artists such as Geoff Manthorne and office manager Mary Alice Yeskey. It was a surreal moment for both of us.

Chef Duff led us to a table where Debra showed him her design for our Maryland Day cake. He looked thoughtfully at the design as if hoping to add some creative twist or embellishment. He picked up his pencil to sketch the design on his pad of paper, and not changing a thing, sketched the cake just as Debra envisioned it. He loved her design!

It will be the perfect birthday cake for Maryland's 375th birthday! See it for yourself at the Maryland Day festivities at the St. Clement's Island Museum on Wednesday, March 25.

*Photos: (Left) Debra and Chef Duff finalize sketches for the cake. (Right) Debra at the entrance to Charm City Cakes. Photos by Kim Cullins*





---

## Q&A with Chris

---

**Q: What would the Maryland colonists' first winter have been like after they landed at St. Clement's Island in March 1634 and began to live at St. Mary's City?**

A: Had they been back in England, they likely would have looked forward to the yuletide season and Christmas, celebrating with drinking, dancing and feasting. However, that first winter was a time in which all colonists, including the wealthy, dedicated their efforts to establish a town and fight illnesses that often killed new arrivals. Many were still living in the longhouses of the Yaocomico village where they had first settled. The colonists had plenty of food because had they planted crops in the spring and had items to trade with the Native Americans for fish and wild game. Nevertheless, everyone was too busy to prepare elaborate holiday meals. Their focus would have been on making a home in Mary's Land and planning for the spring planting season.

They also would have been planning for the first Maryland Assembly, which was to meet in February to begin making laws for the Maryland colony. The members created a list of proposed laws for themselves and sent them to Maryland's Lord Proprietor, Cecil Calvert. Calvert in turn wrote another set of laws to modify or replace the ones submitted to him and requested that the Maryland Assembly meet again. When the members of Maryland Assembly met for the second time they rejected Cecil Calvert's legislation and sent him forty-one laws that met their approval. Calvert, wanting to maintain stability in the new colony, decided to compromise. He would allow the Assembly to create laws and he would have the authority to approve or reject them.

*Christina Barbour is the Site Supervisor at the St. Clement's Island Museum and also serves as Education Curator and Collections Manager. Photo by Kim Cullins*

## UP AND COMING . . .

### *Set a course for these exciting events*

Visit [www.stmarysmd.com/recreate/museums](http://www.stmarysmd.com/recreate/museums) or call 301-769-2222 for more information on these events.

#### **Appraiser's Fair – January 24**

The St. Clement's Island Museum will host experts to evaluate small furniture, pottery, glassware, old documents, artwork, jewelry, antique dolls, U.S. coins and more. Items will be viewed on a first-come, first-served basis. Limits and fees apply. For more information, look for details in this edition of the *Finer Points* or call Event Coordinator Chris Barbour at 301-769-4723.

#### **Friends' Annual Meeting – February 8**

The Friends Board of Directors invites the membership to attend the Annual

Meeting at the St. Clement's Island Museum at 4 p.m. The agenda will include a report by Friends President Sheila Hiebert, Museum Division Manager Debra Pence, election of board members, and 25th Anniversary Special Briefing. Refreshments will be provided.

#### **Maryland Day – March 25**

Join us at 11 a.m. to celebrate Maryland's 375th birthday at the place where it all began! The St. Mary's County Board of Commissioners will help kick off the Celebrate 375 tourism initiative for St. Mary's County. Enjoy our surprise keynote speaker and birthday cake from Baltimore's Charm

City Cakes, stars of the Food Network "Ace of Cakes" television show.

#### **Piney Point Lighthouse Waterfront Festival – May 9 & 10**

Don't miss this two-day event celebrating the lighthouse and Potomac River maritime history! Free admission both days! Enjoy lighthouse tours, exhibits, demonstrations, children's activities, live music and food. Saturday 10 a.m. to 4 p.m. Sunday noon to 4 p.m. Saturday schedule will include the Potomac River wade-in! Call the Piney Point Lighthouse Museum at 301-994-1471 for specific program times or additional information.

# Member News

## Welcome Aboard New Members!

### Senior

George A. Guy, Leonardtown, MD  
Patricia Lovato, Owings, MD

### Individual

Sharon Wright, Lexington Park, MD

### Family

Bill and Yvonne Eggleston, Falls Church, VA  
Chris and Marianne Fast, Colton's Point, MD  
Drs. Frank and Lisa Galioto, Colton's Point, MD  
Wayne and Joann Guy, Leonardtown, MD  
Chris and Sue Shea, Leonardtown, MD

### Heritage

Ellie Slater, Mechanicsville, MD

## SPECIAL THANKS!

### Donations

The Friends would like to thank **Meadows Farms** of Leonardtown, MD for the thoughtful donation of a \$20 gift card. **The St. Mary's County Antique Arts Association** presented St. Clement's Island Museum Site Supervisor Christina Barbour with a \$25 honorarium as guest speaker for a recent meeting of the group. Chris then donated the honorarium to the Friends. Thank you, Chris!

### In Loving Memory

The Friends would like to thank **Museum Division Manager Debra Pence** for a \$500 gift in memory of Friends member Jim Ingle and **Vicki Hayden** for her gift of \$25 in memory of Marie Meushaw Lee.



## "Celebrate 375" Kicks Off In 2009

The intriguing history of our Maryland begins in our own back yard, at St. Clement's Island in St. Mary's County. Yet, despite this important fact, many don't know it, don't care about it, or think we are located on the Eastern Shore. The *Celebrate 375* tourism initiative (marketing Maryland's 375th birthday in 2009) spearheaded by the St. Mary's County Tourism Office is about to change all that.

St. Mary's County Tourism Manager Carolyn Laray has rounded up many of her tourism industry partners, from restaurateurs to hoteliers, charter fishermen to antique dealers, to create irresistible packages of sites and attractions, some themed, some event-driven, to entice folks to visit St. Mary's County. A website has been created listing weekend getaway packages, giveaway incentives and a myriad of user-friendly tourism information. Visit the website at [www.Maryland375.com](http://www.Maryland375.com) for more information.

Both the St. Clement's Island Museum and the Piney Point Lighthouse, Museum and Historic Park are proud *Celebrate 375* partners.

Be on the lookout for the *Celebrate 375* logo displayed by local tourism industry partners. Please support them by attending their events or patronizing their places of business. The tourism industry offers economic benefit to our community with every purchase of gas, overnight stay, meal purchased, or souvenir bought in local stores and gift shops. We are putting the mat by the front door – it says "WELCOME!"



## Is it the Antiques Roadshow?

Almost! This is the St. Clement's Island Museum version of a one-stop appraisal shop. Dust off your attic treasures and bring antiques, heirlooms, jewelry or curiosity items to the museum, January 24, where experts will estimate the value of your items.

Appraisers of jewelry, dolls, U.S. coins and fine arts items (furniture, pottery, artwork, music boxes, old paper documents, glassware, and small antiques) will be available to share their expert knowledge. The event takes place between 10 a.m. and 3 p.m. and items will be viewed on a first come, first served basis.

Dolls, coins, and jewelry items are \$5 for the first two items and \$10 per additional item. Fine arts items and collectibles are \$5 per item with a TWO-ITEM LIMIT. Bring only items that can be hand carried.

Appraisers will not provide certified appraisals at this event, but you can arrange for an appointment at a later date.

Also, a member of the Washington Conservation Guild will be on hand to offer advice on how to conserve and preserve your collectibles ranging from books and photographs to pottery and paintings. A free soup, coffee and tea tasting will be sponsored by Shoreline Creations and the Chincoteague Seafood Company.

*Photo: Henry Hull, estate appraiser and owner of Commonwealth Antiques and Appraisals, will be one of several appraisers on hand to evaluate items. Photo by Kim Cullins*

## FRIENDS MEMBERSHIP APPLICATION

Name: \_\_\_\_\_

Address: \_\_\_\_\_

Home Phone: \_\_\_\_\_

\_\_MC \_\_Visa Card #: \_\_\_\_\_ Expires \_\_\_\_\_

Make checks payable to Friends of the St. Clement's Island and Piney Point Museums. Your membership is tax deductible.

\_\_New Member \_\_Gift Membership

### MEMBERSHIP LEVELS:

- Senior (\$25)
- Individual (\$35)
- Family (\$50)
- Heritage (\$100)
- Patron (\$200)
- Benefactor (\$500)
  
- Corporate Patron (\$200)
- Corporate Benefactor (\$500)



**ADF South, Inc.**

PROUD CORPORATE BENEFACTORS

The Friends of the  
St. Clement's Island and Piney Point Museums  
38370 Point Breeze Road  
Colton's Point, MD 20626



*Maryland begins here!*